



IXOQUIB'JUYUB' Project - Women of the Mountain

The Project "**Strengthening the Resilience of livelihoods in the face of climate change in the high basins of the Guatemalan Altiplano**", abbreviated as "Resilient Altiplano Project", has a duration of seven years, beginning its implementation in April 2020. The main objective is to strengthen the resilience of communities in the face of the adverse effects of climate change and to improve the recharge and production of water in selected hydrographic basins of the western Guatemalan highlands, through better land use practices by the beneficiary communities.

The **Resilient Highlands Project** will connect basin governance mechanisms and stakeholders with funding sources with an Ecosystem-Based Adaptation (EbA) approach, to ensure that the functions and services associated with the hydrological cycle are maintained through practices land and water management practices that mitigate the impacts of climate change and climate variability.

The **IXOQUIB'JUYUB' Project - Women of the Mountain** will be implemented by HELVETAS Swiss Intercooperation within the framework of the **Medium Donations Program of the Resilient Altiplano Project**, according to the contextual and social conditions of the territory based on the perception of women, Helvetas proposes Address the problems that directly affect the women of the prioritized communities:

- a) Scarcity of water,
- b) Lack of food,
- c) Deforestation; and
- d) Forest fires.

The **IXOQUIB'JUYUB' Project - Women of the Mountain** proposes a comprehensive, systemic and sustainable intervention, addressing the main problems that affect the women of the communities, the actions will contribute with model alternatives that will allow families to replicate and expand the experiences in their livelihoods. The main actors in this project will be community-based women's organizations. The intervention strategy aims to develop a cascade approach, that is, an intervention directed by a field team made up of a forestry specialist and a gender and social organization specialist; that, jointly and in coordination with other actors, they will identify and strengthen the capacities of women leaders so that they become promoters of their own community and are the ones who accompany the families in the implementation of the proposed actions.

Helvetas has adapted and developed methodologies on behavior change, systemic approach to markets, gender and governance, community organization, sustainable management of natural resources and climate change, management of conflict-sensitive projects, among others. All these tools will be reviewed and adapted to achieve the expected results. With an intervention relevant to the cultural and social values of the population. Our intervention is based on the theory of change and strategic partnerships, so throughout the intervention alliances will be established with municipalities, government institutions, community authorities and NGOs so that strategic and sustainable actions are developed jointly. and that they contribute to the ultimate goal, which is to improve the living conditions of prioritized families and communities.

GENERAL OBJECTIVE

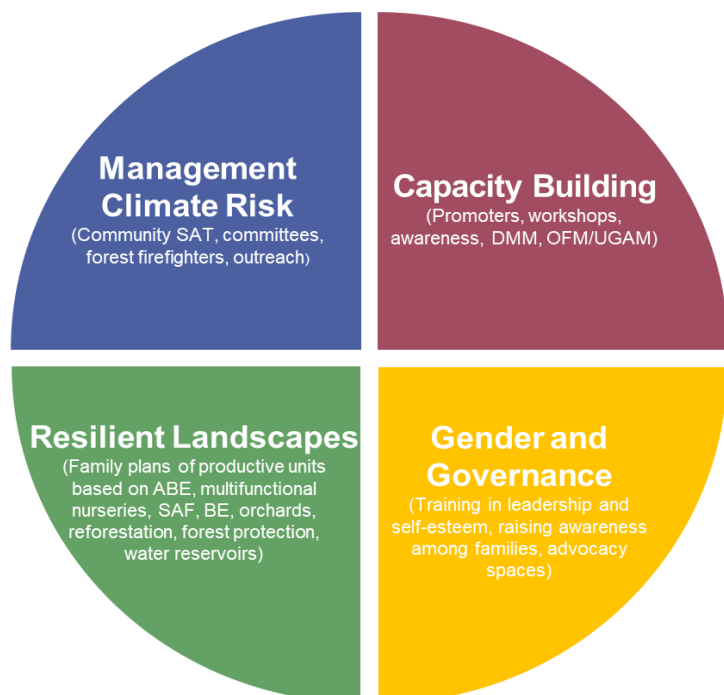
Improve the community competencies of Women and Men to face the effects of climate change, favoring a greater resilience capacity, in the prioritized indigenous communities of the upper basin of the Salinas river (22,23,24) in the municipalities of Santa María Chiquimula del department of Totonicapán and San Antonio Ilotenango of the department of Quiché.

PROJECT OBJECTIVE

The specific objectives expected with the implementation of the project are:

- Develop technical and social capacities in community women's organizations and municipal technical agencies for the implementation of climate change adaptation actions in the prioritized micro-watersheds of the Salinas River.
- Strengthen inclusive local governance processes for greater participation of indigenous women in decision-making processes in the collective management of natural assets for adaptation to climate change.
- Increase forest and productive coverage through climate change adaptation practices with cultural relevance and a gender approach based on the biophysical and sociocultural characteristics of the territory.

MAIN ACTIONS



FAST FACTS

Geographic location:

In the **municipality of San Antonio Ilotenango, department of Quiché**, in 10 villages: Tzacaguip, Chiaj, Chicho, Xebaquit, Chuichop, Sac-Xac, Temala, Canamixtoj, Chocoja, Patzala; 10 Hamlets: Pajuyum, Xeul, Chuitzununa Sac-Xac, Chuiacruz, Tzancampec, Chuitzununa-Canamixtoj, Pacomon, Ixchop, Chitun; 1 Sector: Lobos and Cortez; and Zone (2): Zone 2 Barrio Norte, Zone 4 Chujip.

In the **municipality of Patzite in the department of Quiché**, the project prioritizes the communities of Paxocol and Chuicojonop.

In the **municipality of Santa María Chiquimula, Department of Totonicapán**, the project prioritizes the Northeast area of the municipality, mainly in the Casa Blanca Village and the Chiyat, Tzununá and Pacholip areas.

Phase and duration: Single Phase, 2 years

Start date: April 25, 2023

Finish date: June 30, 2025

Phase budget: Q 3,625,951.50

Main Stakeholders:

Municipal Governments: Municipalities, Municipal Directorate for Women -DMM-, Municipal Environmental Management Unit -UGAM-, Municipal Forestry Office -OFM-.

Government Institutions: Ministry of Environment and Natural Resources -MARN-, Ministry of Agriculture, Livestock and Food -MAGA-, Rural Extension Agencies -AMER-, National Forest Institute -INAB-, National Coordinator for Disaster Reduction -CONRED -; and National Institute of Seismology, Volcanology, Meteorology and Hydrology -INSIVUMEH.

Platforms and Networks: Forestry Agreement Roundtable for Region VI -MESAFORC VI-, Southwestern Climate Change Network -REDSOC- among others.

Beneficiary population: Women, men, girls, boys, adolescents, the elderly, the population with disabilities.

Donors:

- GCF (Green Climate Fund)
- Korea International Cooperation Agency (KOICA)
- HELVETAS Swiss Intercooperation

ALTIPLANO RESILIENTE
Cuenas conservadas | Comunidades productivas



More information IXOQUIB'JUYUB' Project in:

HELVETAS Swiss Intercooperation Guatemala

1a. avenida 1-27 "A", zona 5

Ciudad de Quetzaltenango, Quetzaltenango

helvetas.guatemala@helvetas.org

www.helvetas.org/es/guatemala/